

# Simplified Chemical Feed

For municipal water treatment applications



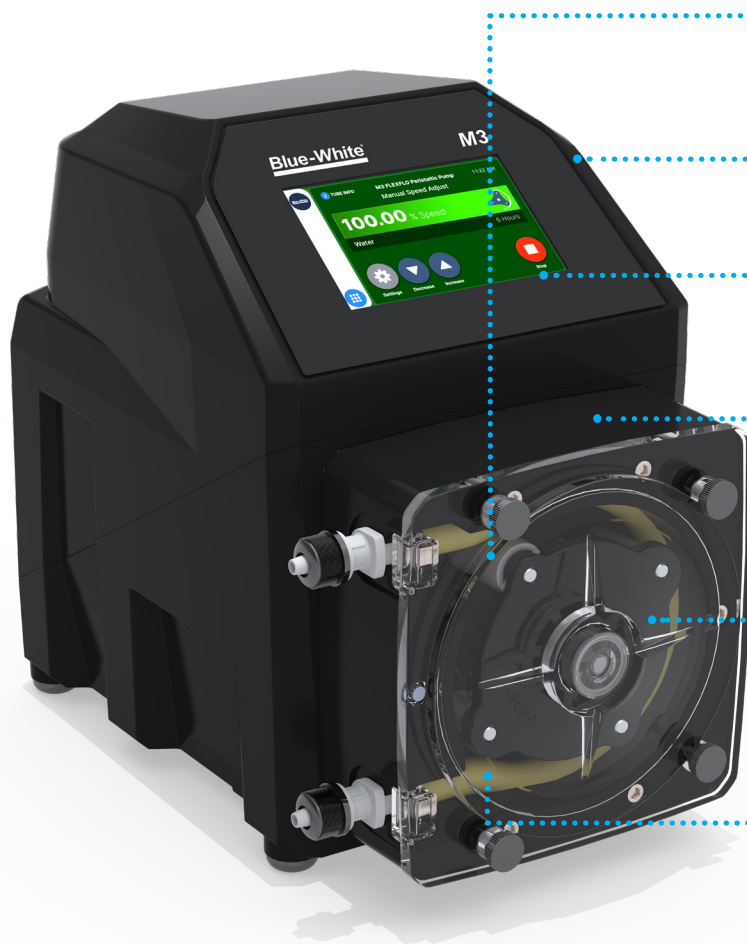
# FLEXFLO<sup>®</sup>

Peristaltic Metering Pumps

**M3**

**M4**

# How do FLEXFLO® pumps simplify chemical feed?



## Accurately engineered rollers

CNC precision machined squeeze rollers for optimum squeeze, unparalleled accuracy, and longer tube life.

## Brushless DC motor

BLDC motor reduces energy costs and is more durable compared to AC motors.

## Touchscreen display

Large UV and chemical resistant 5" display with intuitive icon-based touchscreen controls, works with or without gloves.

## Built-in leak detection

Patented Tube Failure Detection (TFD) senses tube rupture by detecting chemical in the pump head. No false triggering. Comes standard with every FLEXFLO® pump.

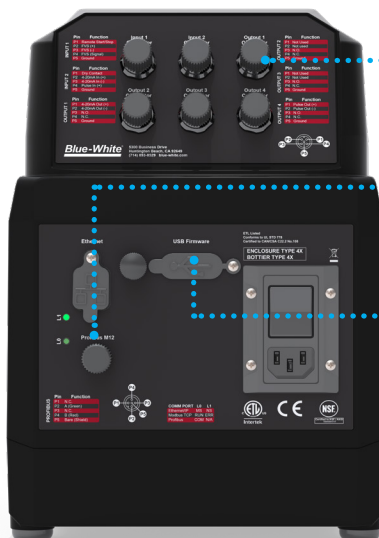
## Minimal maintenance

No tools are required to open the pump head. The only wear part, the tube, can easily be replaced. The integrated 'life cycle counter' can accurately determine maintenance intervals.

## Tubing options

Three available tube materials for chemical compatibility: Flex-A-Prene®, Flex-A-Thane®, and Flex-A-Chem®.

## Simplified I/O connections



## IP rated M12 connection ports

Protect against dust, moisture, and changes in temperature.

## Ethernet and PROFIBUS ports

Industrial protocols allow for enhanced supervision and automation.

## USB-C connection port

Download the latest firmware in the field.

## A broad range of outputs and features



# FLEXFLO® M3

Specially designed to meet application requirements of medium to large output volumes in water and wastewater where precise chemical metering is necessary. M3 remote control signal options include Pulse, 4-20mA, Modbus TCP, EtherNet IP, and PROFIBUS for enhanced supervision and automation for critical metering and transfer applications.

### Technical Overview

GPH	.0002 - 33.3	Enclosure Rating	NEMA 4X (IP66)
LPH	.0007 - 126	Standards	cETLus, CE, NSF61
PSI	125	Power Supply	100 to 240VAC-50.60 Hz
Bar	8.6	Warranty	5 years

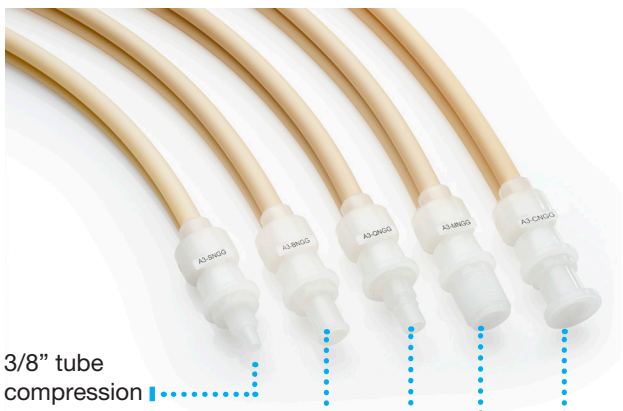


# FLEXFLO® M4

When your water treatment application calls for higher volume chemical feed output combined with the latest engineering functions, choose the FLEXFLO® M4. Remote control signal options include Pulse, 4-20mA, Modbus TCP, EtherNet IP, and PROFIBUS for enhanced supervision and automation for critical metering and transfer applications.

### Technical Overview

GPH	.0028 - 158.5	Enclosure Rating	NEMA 4X (IP66)
LPH	.0108 - 600	Standards	cETLus, CE, NSF61
PSI	125	Power Supply	100 to 240VAC-50.60 Hz
Bar	8.6	Warranty	5 years



3/8" tube  
compression

Barb fitting

Quick Disconnect

Tri-Clamp

1/2" M/NPT

## Tube materials and fittings

**Flex-A-Prene®** tubes are uniquely engineered and designed for optimum performance and pressure capability. It is an excellent material for most water treatment applications. Chemically resistant to 25% Sodium Hypochlorite, 50% Sulfuric Acid, 30% Fluosilicic Acid, Ferric Chloride, Alum, and many others.

**Flex-A-Chem®** tubes consists of an outer Norprene jacket with an inner liner that is virtually unaffected by acids, bases, salts, ketons and alcohol.

**Flex-A-Thane®** this polyerethane material can be used with a variety of chemicals including oil and water based polymers. Sodium Hypochlorite, Alum, Ferric Chloride, fuels, libricants, and many others.

## Premium accessories to complete your system

### Quick Disconnect Fittings

Safely and quickly disconnect your pump with Blue-White's Quick Disconnect Fittings. The red discharge fitting has an automatic check valve, preventing chemical backflow. The white suction fitting functions as a check valve when tubing is detached, preventing loss of prime and spills during routine maintenance.

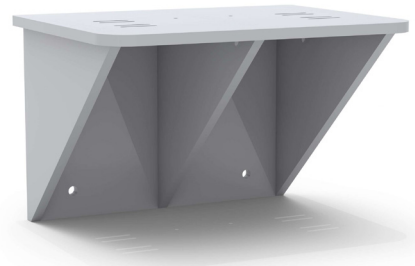
- KIT-QSV 1/4" ID Tube Compression Fitting FKM o-rings
- KIT-QSE 1/4" ID Tube Compression Fitting EP o-rings
- KIT-QMV 1/2" M/NPT Fitting FKM o-rings
- KIT-QME 1/2" M/NPT Fitting EP o-rings
- KIT-QBV 1/2" Barb Fitting FKM o-rings
- KIT-QBE 1/2" Barb Fitting EP o-rings



### Wall Mount Kit

Mount your pump at a convenient height to improve ergonomics. The wall mount kit comes with a tough, chemical resistant high-density polyethylene bracket and four concrete wall anchors.

- KIT-PSM



### M12 Connection Cables

Compatible with Blue-White's FLEXFLO® M3 and M4, our M12 connection cables offer fast and easy connections even in challenging conditions.

- KIT-M12 M12 Cable Assembly, 10 ft, Qty 2
- KIT-M12-2-15 M12 Cable Assembly, 15 ft, Qty 2
- KIT-M12-2-30 M12 Cable Assembly, 30 ft, Qty 2
- KIT-M12-3 M12 Cable Assembly, 10 ft, Qty 3
- KIT-M12-3-15 M12 Cable Assembly, 15 ft, Qty 3
- KIT-M12-3-30 M12 Cable Assembly, 30 ft, Qty 3



### M12 Network Bus Connection Cable

Compatible with Blue-White's FLEXFLO® M3 and M4, our M12 network bus connection cables offer fast and easy connections for process automation.

- KIT-DP3

